



# Your Seminole. **YOUR CHAMBER.**



## WHY I'M A MEMBER

*“Our membership has been the single most important investment we have made for our business.”*

Michael & Sheila Kramer,  
Lake Mary Life Publishing Inc.



# ADVOCATE Membership Track

The Advocate Membership Track provides its members the opportunity to participate in many Chamber initiatives without further investment. It is specifically designed to showcase the businesses and organizations vital to the success of Seminole County and the Central Florida region.

The future growth of the community is a partnership between the Seminole County Chamber and you. Included in these membership levels are all CORE membership benefits, as well as significantly enhanced features to maximize your engagement and exposure opportunities.

|  | Trustee         | Chairman        | President       | Executive       |
|--|-----------------|-----------------|-----------------|-----------------|
| <b>CORE Membership Package (See right for details)</b> | Included        | Included        | Included        | Included        |
| Admission to State of the County                       | Four            | Four            | Two             | One             |
| Admission to Seminole County State of Schools          | Four            | Four            | Two             | One             |
| Admission to Seminole Business Awards                  | Four            | Four            | Two             | One             |
| Admission to Seminole Business Awards VIP              | Four            | Two             | One             |                 |
| Admission to Three (3) Professional Women's Luncheons  | Four            | Four            | Two             | One             |
| Admission to Mayors Update                             | Four            | Four            | Two             | One             |
| Admission to Legislative Update                        | Four            | Four            | Two             | One             |
| Admission to Annual Meeting                            | Four            | Four            | Two             | One             |
| Reserved table at Good Morning Seminole                | Two             | One             |                 |                 |
| EV Chargers*   | Included        | Included        | Included        |                 |
| Locations/brands eligible for benefits                 | Fifteen         | Ten             | Five            | Three           |
| Banner advertisement on website                        | Four weeks      | Two weeks       | One week        | One week        |
| Banner advertisement on newsletter                     | Four weeks      | Two weeks       | One week        |                 |
| Ribbon Cutting   | One             | One             | One             | One             |
| Enhanced Listing                                       | Included        | Included        |                 |                 |
| Press Release (per week)                               | Two             | Two             | Two             | One             |
| <b>Sponsorship credits</b>                             | <b>\$6,500</b>  | <b>\$2,500</b>  | <b>\$1,500</b>  |                 |
| Company inclusion on all newsletters                   | Logo            | Text            |                 |                 |
| Company inclusion on all general chamber collateral    | Logo            | Text            |                 |                 |
| Company inclusion at all chamber events                | Logo            | Text            |                 |                 |
| Printed mailing labels                                 | Six             | Four            | Two             |                 |
| Digital mailing labels                                 | Six             | Four            | Two             |                 |
| Seat on Board of Directors for C-level Executive       | One             |                 |                 |                 |
| <b>Value</b>   | <b>\$41,846</b> | <b>\$32,553</b> | <b>\$25,057</b> | <b>\$11,244</b> |
| <b>Lump Sum Investment</b>                             | <b>\$11,900</b> | <b>\$5,900</b>  | <b>\$3,000</b>  | <b>\$1,200</b>  |

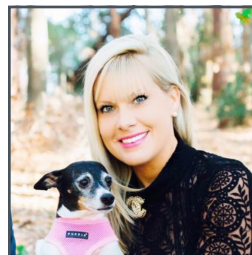
**MOST POPULAR**



## WHY I'M A MEMBER

*“The Seminole Regional Chamber is one of the most active and engaged chambers I’ve ever been associated with.”*

Richard Kerr  
Insurance Office of America



## WHY I'M A MEMBER

*“As a Seminole County resident, the Chamber has allowed me to develop new and lasting relationships within our beautiful community.”*

Kelly Rogers  
Findsome & Winmore

# ENGAGE Membership Track

The Engage Membership Track provides smaller companies ample exposure opportunities, access to information that impacts their businesses, and abundant opportunities to develop professional relationships throughout Seminole County. Depending on the level of your choice, you can participate in the Expo, events, digital media opportunities, and more; without any additional financial investment.

For many Chamber members supporting our mission – providing programs, services and leadership to enhance economic vitality and quality of life in our community – is reason enough to join. For those who desire a more direct return on your investment, the Engage Membership Track is the place to start.

|  | Partner  | Entrepreneur |
|--|----------|--------------|
| <b>CORE Membership Package</b> (See right for details) | Included | Included     |
| <b>Admission to Seminole Business Awards</b>           | Two      |              |
| <b>Standard booth at the Seminole Business Expo</b>    | Included |              |
|  |          |              |
|  |          |              |
|  |          |              |
| <b>Banner advertisement on website</b>                 | One week |              |
|  |          |              |
|  |          |              |
| <b>Press Release</b> (per week)                        | One      | One          |
|  |          |              |
|  |          |              |
|  |          |              |
| <b>Value</b>   | \$10,130 | \$9,690      |
| <b>Lump sum investment</b>                             | \$840    | \$420        |

### CORE Membership Package:

Included in this package is:

- Admission to:
  - ChamberU
  - Good Morning Seminole
  - Business After Hours
  - Altamonte Small Business Networking
  - Business Alliance Business Networking (\$15 for Lunch)
  - Lake Mary Council Coffee Club
  - Longwood Lunch & Learn (\$15 for Lunch)
  - River Council Business Networking
  - South Seminole Business Networking
  - Virtually Seminole Council
- Reduced admission to Signature events
- Member plaque, decal & "Proud Member" online badge
- Collateral display inclusion at Good Morning Seminole
- Affinity and member savings:
  - Fingerprinting Services, Healthcare, Credit Card Processing, Office Supplies, No-cost EV Chargers, and Cybersecurity
- Website listing for your:
  - Business
  - Special offers
  - Events
  - Announcements
- Newsletter placements for your:
  - Special offers
  - Events
  - Announcements
- Leadership opportunities on committees and councils
- Certificate of origin

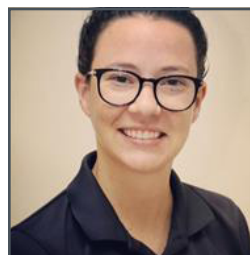
# Join Now at [SeminoleBusiness.org](http://SeminoleBusiness.org)



### WHY I'M A MEMBER

*"Long-term relationships are critical to an insurance agency and the Chamber is a key to fostering those relationships."*

Mike Brockman  
Brockman Insurance



### WHY I'M A MEMBER

*"The Seminole County Chamber has been a huge blessing with growth, professionally and personally."*

Kate Olsen  
Your CBD Store Longwood and Lake Mary

Effective January 2025 | All benefits subject to change | \$50 fee is charged to process new members

Non-profit companies with less than 25 employees are eligible for a 50% discount on the Entrepreneur level and must submit their C3 documentation with application

Additional location listings are not available on the Engage Membership Track

## More Visibility:

- **Shared Collateral Table:** Bring flyers, coupons and business cards for the shared collateral table with other members to bring awareness and new customers to you.
- **Seminole Business Expo Booth:** Members have a unique opportunity to reach more new customers through their membership with a booth at the Seminole Business Expo.
- **Enhanced Listing:** Upgrade your page to include: Logo | Photos | Priority Placement in the Online Business Directory | 1600 Character Business Description | Additional 200 Character Description right in the Search Results.
- **Email Banner Ads:** This advertising opportunity provides your company exposure to our 9,000+ email database twice a week through digital banner ads linking directly to your site.

## Mission:

To serve the interest of our members and the business community by providing programs, services and leadership to enhance economic vitality and quality of life in our community.

## Vision:

Be and be recognized as the most dynamic Chamber in the country.

## 2024 Highlights



### SOCIAL MEDIA

100,000 reached on Facebook and Instagram



### MARKET

Chamber emails reach nearly 10,000 readers twice a week



### YOUR EVENTS FOUND HERE

Top member event reached more than 1,000 readers



### YOUR NEWS FOUND HERE

Top member news reached more than 700 readers



### NETWORKING IN ACTION

180 small networking events



### GROWING STRONGER TOGETHER

206 businesses joined



### CHAMBER WEBSITE

SeminoleBusiness.org had more than 78,000 users



### ENGAGEMENT

12,500 event attendees

## INVEST IN THE CHAMBER TODAY!

Call 407.708.4600 to discuss your best investment level.



### WHY I'M A MEMBER

*"Our Chamber membership has provided us with great business opportunities and lifelong relationships."*

Brad & Lauren Miller  
J. Wayne Miller Company



### WHY I'M A MEMBER

*"Being a part of the Seminole Chamber gives us the ability to work closely with businesses to keep our schools A+"*

Tina Calderone, Ed.D.  
Former SCPS Board Member